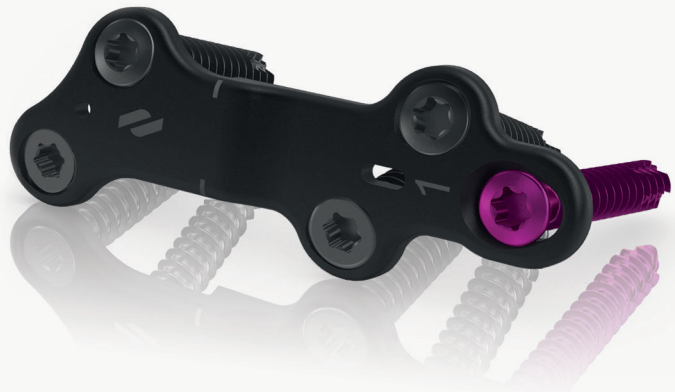




Plating Systems

MTP / Lapidus / Osteotomy Basal / Utility



- . Monoaxial Locking Screws & Polyaxial Screws +/-15°
- . Low Profile Plate Design
- . Plating Systems include Compression Hole Option
- . Plating Systems include Inter-fragmentary Screw Option

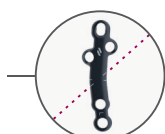


A comprehensive plating system to address forefoot and midfoot pathologies, combining a unique, indication-specific design; contoured low profile configurations; monoaxial and polyaxial screw options and compression holes in the MTP, Utility and Lapidus Plates.

The Airlock Solution !

Threaded holes for Ø 3.0 mm & Ø 3.5 mm
Locking or Non Locking screws.

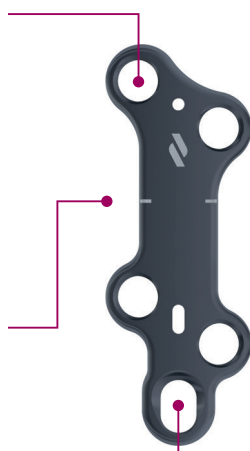
Visual alignment guide for compressive plantar screw.



Visual alignment guide for arthrodesis line.



Compression hole for Ø 3.0 mm Non Locking Screws : allowing 1.5 mm of additional compression.



Features

Indication specific precontoured plates.

Anatomically positioned compression holes corresponding to areas with high density bone.

Low Profile design reduces soft tissue irritation and subcutaneous discomfort.

- MTP Plate : 1.3 mm.
- Basal Osteotomy Plate : 1.0 mm.
- Lapidus Plate : 1.5 mm.
- Utility Plate : 1.5 mm.

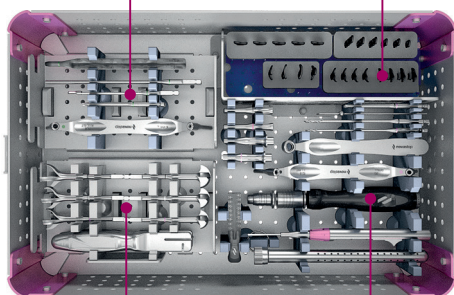
MTP plate : anatomically shaped plate with 0° of dorsiflexion. Delivers 15° of metatarsophalangeal dorsiflexion. Preserves 1° anatomical phalangeal valgus.

Titanium TA6V ELI Alloy.

Combined Instrumentation ! Airlock & Nexis

Nexis Module
Headless Compression
Screw Ø 4.0 mm

Trial Implants



**Benders & Reamers
Module**

**Airlock
Instrumentation**

Color Code : ● : Ø 3.0 mm. ● : Ø 3.5 mm. ● : Ø 4.0 mm.

cleanSTART® Technology

- « No Touch » handling system.
- Reduced storage space requirements.
- Color-coded labels.
- Customizable, modular implant dispenser console.



The Airlock Range



..... Typical Indications

First Metatarsal fracture fixation.

Lapidus Procedure (Hallux Valgus).

First MTP joint arthrodesis (Hallux Valgus – Hallux Rigidus).

Opening or closing basal osteotomies (Hallux Valgus).

Partial or complete Lisfranc Arthrodesis.

MTP / MTP Short



- Left and Right Options

Standard

Short

Basal Osteotomy



- 0, 3, 4, 5 mm Wedge Options
- Left and Right Options

R

L

Utility



- 2, 3, 4, 5, 6 & 7 Holes

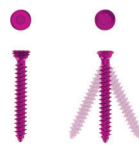
Lapidus



- 0, 1, 2 & 3 mm Step Options
- Right and Left Universal

Monoaxial & Polyaxial System - Ø 3.0 mm & 3.5 mm

- Monoaxial Locking screws
- Polyaxial Non-locking screws
- Conical Head
- Self tapping
- Self-retaining screw driver tip head design



+/- 15°



Torx T8



+/- 15°



Torx T8

Nexis Ø 4.0 mm



Torx T10

Driver Recess

Distal Thread Diameter

Length

K-Wires

Drill Bit

Ø 3.0 mm

10 - 30 mm*

-

Ø 2.0 mm

Ø 3.5 mm

10 - 40 mm*

-

Ø 2.5 mm

Ø 4.0 mm

18 - 50 mm**

Ø 1.4 mm

Ø 2.7 mm

* 2 mm increments.

** 2 mm increments; Also available in 55 mm and 60 mm lengths.

References

MTP



Ref	Designation
PL010140	Standard Right
PL010240	Standard Left
PL010134	Short Right
PL010234	Short Left

Lapidus



Ref	Designation
PL030200	Step 0
PL030201	Step 1
PL030202	Step 2
PL030203	Step 3

Utility



Ref	Designation
PL040016	2 Holes Length 16
PL040022	3 Holes Length 22
PL040028	4 Holes Length 28
PL040034	5 Holes Length 34
PL040040	6 Holes Length 40
PL040046	7 Holes Length 46

K-Wires & Positioning Pins

Ref	Designation
XPP01003	Spherical Positioning Pin
33-0214-100	K-Wire Ø1.4 lg100
33-0216-150	K-Wire Ø1.6 lg150

Basal Osteotomy



Ref	Designation
PL020100	Closing Wedge Right
PL020200	Closing Wedge Left
PL020103	Open Wedge 3 Right
PL020203	Open Wedge 3 Left
PL020104	Open Wedge 4 Right
PL020204	Open Wedge 4 Left
PL020105	Open Wedge 5 Right
PL020205	Open Wedge 5 Left

Airlock Screws Ø 3.0 mm & Ø 3.5 mm



Length	Locking Screws		Non Locking Screws	
	Ø 3.0 mm	Ø 3.5 mm	Ø 3.0 mm	Ø 3.5 mm
10 mm	SP013010	SP013510	SP023010	SP023510
12 mm	SP013012	SP013512	SP023012	SP023512
14 mm	SP013014	SP013514	SP023014	SP023514
16 mm	SP013016	SP013516	SP023016	SP023516
18 mm	SP013018	SP013518	SP023018	SP023518
20 mm	SP013020	SP013520	SP023020	SP023520
22 mm	SP013022	SP013522	SP023022	SP023522
24 mm	SP013024	SP013524	SP023024	SP023524
26 mm	SP013026	SP013526	SP023026	SP023526
28 mm	SP013028	SP013528	SP023028	SP023528
30 mm	SP013030	SP013530	SP023030	SP023530
32 mm	-	SP013532	-	SP023532
34 mm	-	SP013534	-	SP023534
36 mm	-	SP013536	-	SP023536
38 mm	-	SP013538	-	SP023538
40 mm	-	SP013540	-	SP023540

Nexis Screws Ø 4.0 mm



Length	Ref*
18 mm	SC050018
20 mm	SC050020
22 mm	SC050022
24 mm	SC050024
26 mm	SC050026
28 mm	SC050028
30 mm	SC050030
32 mm	SC050032
34 mm	SC050034
36 mm	SC050036
38 mm	SC050038
40 mm	SC050040

* Full Range includes lengths of 18 - 50 mm in 2 mm. Increments in 55 & 60 mm.

Novastep :

Espace Performance – Alphasys, 35769 SAINT-GREGOIRE - Cedex France.
Tel : + 33 (0) 2 99 33 86 50 / Fax : + 33 (0) 9 70 29 18 95
contact@novastep-ortho.com / www.novastep-ortho.com

Please Note :

Carefully read the enclosed Instructions For Use (IFU) and all packaging label information.
Devices : Implants : Class IIb-CE0120 / Instruments : Class I / Class IIa -CE0120.

Made in France.